

CERTIFICATE OF LOCATION OF GOVERNMENT CORNER

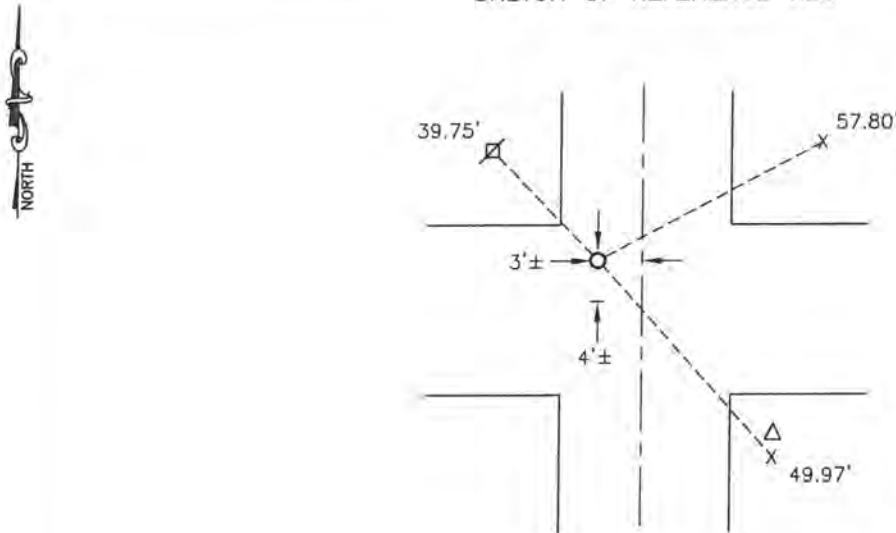
NORTHEAST Corner of Section 7, Township 108, Range 43, 5TH P.M.

STATE OF MINNESOTA, County of MURRAY

At the corner location shown on the sketch:

- On 3/10/14 found a DNR monument
DATE
- left monument as found, lowered monument, removed monument (explain)
- On 3/10/14 placed a 5/8" iron w/seal #50343
DATE

SKETCH OF REFERENCE TIES



Minnesota State Plane Coordinate
 System Murray County Datum
 NAD83 (1996)

N: 222074.766
 E: 427216.087

Nail and survey marker in wood pedestal post SE 49.97'
 Nail and survey marker in fiber optic marker post NE 57.80'
 Nail and survey marker in utility pole NW 39.75'

Statement of evidence relative to this corner location is on back of page.

I hereby certify that this document and the data contained herein was prepared by me or under my direct supervision.

[Signature] 1/21/15
SIGNATURE DATE

Registration No. 50343

- Land Surveyor, Professional Engineer
- County Surveyor, County Engineer

OFFICE OF THE COUNTY RECORDER

County of _____

I hereby certify that this document was filed in the Co. Recorders office at _____ .M on the _____ day of FEB 20 2015 A.D. 20__

County Recorder Evelyn C. Larson

By _____, Deputy

DOCUMENT NO. _____

Statement of Evidence

In 1866, J. W. Bishop did the original subdivision of the township.

On July 6, 1982, Lowell Pommerening found a 4"x5"x6" field stone 32" below the surface of the road. He set a DNR monument over found field stone at the roads surface.

On March 10, 2014, Bueltel-Moseng Land Surveying found a DNR monument 2"± below the surface. Set $\frac{5}{8}$ " iron with seal #50343 over found monument. It is 3'± west of centerline of north-south road and 4'± north of centerline of east-west road.